

**WELCOME TO THE**

**WE WILL  
BEGIN AT  
5:00 PM**

-----

**PLEASE  
MUTE  
YOUR MIC**



**VIRTUAL SEMINAR  
FOR CPS  
CHESS PARENTS**

**SY 23-24**



**PRESENTED BY DAVID HEISER**

# ASKING QUESTIONS

During the presentation, if you have a questions, we ask that you either type it chat or raise your hand if you have the extension activated.

There will be a question period at the end of presentation.

# ACADEMIC CHESS TEAM

The Academic Chess programs has moved to Student Support and Engagement (OSSE) and is under Out-of-School Time (OST) Activities

- Chess Coordinator - Arlecia Taylor
- Chess Consultant – David Heiser
- Chess Project Assistant - Jourdain Gant

# PROGRAMS



## Academic Chess (K-12)

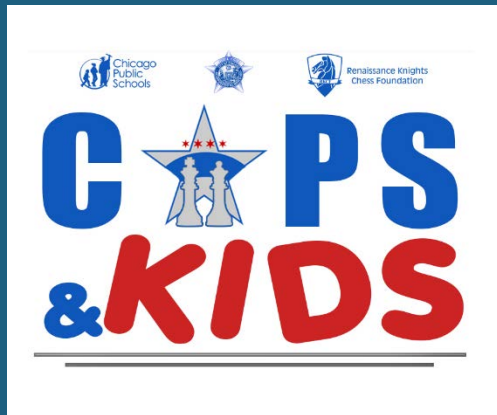
Academic Chess provides elementary & high school students from diverse communities across the city with an opportunity to participate in vibrant chess programs. The CPS Academic chess students participate in after-schools clubs and compete in tournaments throughout the year.



## Chess Queens (9-12)

CPS Chess Queens is a year-round program intended to empower female chess leaders, foster an inclusive and engaging environment for girls, and expand the chess community.

# PROGRAMS



THE CHESS SUMMER  
EXPERIENCE

## Cops & Kids Chess Initiative (5-12)

Cops & Kids is a year-round after-school program that promotes peace in the home, schools and communities by increasing positive relationships between youth and police officers while utilizing the game of chess as the vehicle for engagement.

## Summer Experience (5-12)

Summer programming extends the work we do throughout the school year and is more than just a chess camp. From bring cops and kids together to providing college readiness workshops and specialized field trips, participants become positive citizens in their communities.

# STUDENTS

## Academic Chess Students

- Are from schools that are registered in our programs
- Students can participate in both in person and online programs

## Non-Academic Chess Students

- Are from schools that are not registered in our programs
- Students can participate in online programming only



**MANDATORY:** Anyone who serves as a Coach, Assistant Coach, Volunteer, Chaperone, or in any other capacity in a school's chess program where they have contact with students (in-person or virtually) has to have completed & cleared the appropriate CPS Background Check Level prior to having contact with students.

Anyone who has not been cleared at the appropriate CPS Background Check Level are not allowed to attend practices, tournaments, escort on buses, etc.

Any questions on the CPS Background Check Policy should contact their school administration.



# PARENT PERMISSION FORM



## 2023 - 2024 ACADEMIC CHESS

### PARENT PERMISSION FORM, MEDIA RELEASE, and BEHAVIOR AGREEMENT

I give my child (student name) \_\_\_\_\_

attending (school name) \_\_\_\_\_ permission to participate in the CPS Academic Chess program during 2023-2024 school year and to attend CPS sanctioned chess tournaments that are held at various locations in the city of Chicago, state championship competitions held in Illinois, and national championships held in the United States.

The Chicago Public Schools Office of Teaching and Learning and the Department of Academic Competitions have high expectations for students participating in each of the Academic Chess Competitions. We expect students to be respectful of peers, coaches, volunteers, and administrators. We also expect students to be mindful of all rules and adhere to them. All students are expected to comply with the Chicago Public Schools' Student Code Conduct at school and during every chess competition.

I understand that participation in the online and over the board tournaments requires that my child's personal data be used for registration, and I hereby give consent for my child's chess coach and/or administrator, and Academic Competition staff to share my child's name, grade, date of birth, school, and any necessary medical condition that the tournament organizer needs to make accommodations for with Renaissance Knights. Furthermore, I authorize Academic Competition staff and Renaissance Knights to use this information as necessary to create ChessKid.com, US Chess, and FIDE memberships for my child as needed, and to register my child for State, National, and other tournaments my child may attend.

I understand that the team coach is the official chaperone and that he/she has full responsibility to make medical or other necessary decisions and that as the child's parent and/or legal guardian, and that I will be held responsible for any damages resulting from the student's behavior.

I, hereby release the Chicago Public Schools, the Office of Teaching and Learning, Renaissance Knights, and the Department of Academic Competitions from all liability and responsibility and hold each of them harmless for any damage or injury which may be incurred or caused by my child before, during or following any such competition, including during travel. I further consent to the release of information about or relative to my participation activities, including scores, photographs, sound video recordings and any other data. The Academic Chess Program shall have full rights to reproduction and use of all such materials as will outside tournament organizers.

By signing this form, the parent/legal guardian and student hereby agree to follow the competition rules, adhere to the student behavior agreement, and accept interpretation and decisions made by the Academic Competition's team.

Signature of student \_\_\_\_\_ Date: \_\_\_\_\_

Signature of Parent/Guardian \_\_\_\_\_ Date: \_\_\_\_\_

Please complete and return this form to your school's chess coach by October 15, 2023

Coaches are to retain this form and have a copy of it to all tournaments





2023 - 2024 ACADEMIC CHESS

STUDENT DATA SHEET

LAST NAME \_\_\_\_\_ FIRST NAME \_\_\_\_\_ MI \_\_\_\_\_

DATE OF BIRTH \_\_\_\_\_ GRADE \_\_\_\_\_

SCHOOL NAME \_\_\_\_\_ GENDER IDENTITY \_\_\_\_\_

US CHESS ID # \_\_\_\_\_ ID look-up at <https://new.uschess.org/player-search>  
ENTER NONE IF YOU DON'T HAVE ONE

CHESSKID USERNAME \_\_\_\_\_  
ENTER NONE IF YOU DON'T HAVE ONE

PARENT NAME \_\_\_\_\_

CELL PHONE NUMBER \_\_\_\_\_

EMAIL \_\_\_\_\_

HOME ADDRESS \_\_\_\_\_ ZIP CODE \_\_\_\_\_

Does your child have any medical conditions/allergies of which we should be aware? Yes No

If yes, please specify also include any medication your child is currently taking (prescription and

over-the-counter): \_\_\_\_\_

\_\_\_\_\_

Please complete and return this form to your school's chess coach by **October 15, 2023**

Coaches are to retain this form and have a copy of it to all tournaments

# STUDENT DATA SHEET

# MANAGEMENT

Individual schools manage their chess clubs/classes

## Academic Chess

- Provides oversight of school programs
- Runs the CPS tournaments
- Provides stipends that schools can use to pay for coaches
- Provides busing
- Provides meals at tournaments
- And more

## TOURNAMENTS

Academic Chess will be holding both in person (OTB) and online tournaments

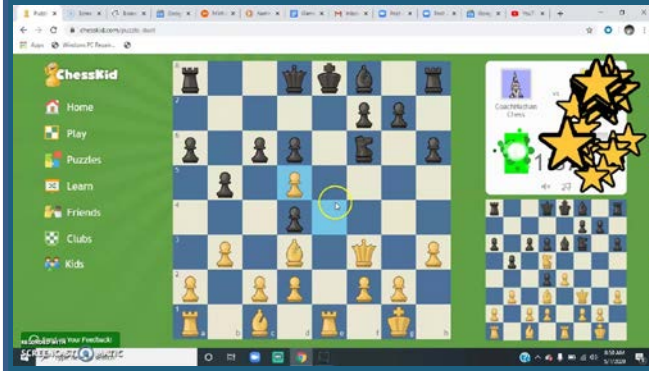
- OTB tournaments are opened to Academic Chess Students
- Online tournaments are open to both Academic Chess and non-Academic Chess students

List of tournaments can be found at [www.cpschess.org](http://www.cpschess.org)

# CPS ONLINE TOURNAMENTS

- Tournaments conducted on the ChessKid Platform
- Students must have a ChessKid account associated with CPS
- Access tournament by computer not a mobile device
- Event page lists details: sections; times; awards; etc
- Limitations - We are unable to
  - Troubleshoot internet connection
  - Manually pair players
  - Adjust game results
  - Day of login issues, problem with joining tournament

[Video on How Kids Join a Chess Tournament](#)



# JOINING ONLINE TOURNAMENTS

- No pre-registration for most tournaments
  - **JOIN TOURNAMENT link** opens 15 minutes before the start of the tournament
  - **MUST ACCESS** the tournaments **THROUGH A WEB BROWSER**, not a mobile device of any kind
  - To participate students must have their ChessKid account associated with the CPS Enterprise account 3 days prior to the tournament.
- ❖ [How to Join a tournament video](#)

# JOINING ONLINE TOURNAMENTS



- OCT 9 - SEASON OPENER
- NOV 22 - FALL
- DEC 23 - WINTER
- JAN 15 - MLK DAY
- FEB 19 - PRESIDENTS' DAY
- APRIL 1 - SPRING

# CPS IN-PERSON TOURNAMENTS

Event page list detail information to include

- Date, location, grade levels, who can play
- Safety protocols
- Who can register players
- Registration & player substitution period
- Deadline to request busing
- Tournament details: format; sections; times; etc.
- Lunch provided for players & chaperones
- Boards, sets & clocks provided in tournament room, schools need to bring for skittles room

## TOURNAMENTS CHAPERONES

Schools will be limited to a set number of chaperones that is listed on the event page.

- Coaches count as chaperones
- They must be a CPS employee/teacher, Misc Employee, Level I or II Volunteer, or a CPS vendor
- Schools are responsible to ensure they meet CPS policy on level needed; i.e. to travel on a bus
- Responsible for their school's students at the tournament





## RATING TOURNAMENTS

Beginning this year, we will rate our tournaments with the US Chess Federation. This does not change how we operate our tournaments as we have been running our tournaments in compliance with US Chess rules.

Any CPS student playing in an Academic Chess tournament must have a valid US Chess Membership. A student with an expired membership or needing one will be provided with a membership at no cost once the student competes in an Academic Chess tournament.

Memberships will not be provided to students just because their membership has expired, or they do not have one.

# USCF MEMBERSHIPS



In order to create/renew USCF Memberships coaches must have fully completed Student Data Sheets with them at the tournaments; either paper or electronic format.

**EACH USCF MEMBERSHIP MUST USE AN UNIQUE EMAIL ADDRESS.**

When using an email address already associated with another USCF membership, their system will renew that membership. Also, the email address is used to log into an individual's USCF account.

# USCF MEMBERSHIP SERVICE AREA

US Chess Membership Service Area can be found at

<https://www.uschess.org/msa/>

This is where you can:

1. Look up membership information to include a player's ID number and expiration date
2. Find a player's ratings that includes the monthly Rating Supplement that is used for pairing tournaments
3. See a player's tournament history

The screenshot shows a web browser displaying the USCF Membership Service Area. The page title is "1317875: ASHEK UZZAMAN". Below the title, there is a table with columns for Date, Title, Event, Section, and Notes. The table lists several tournament results for the player.

Date	Title	Event	Section	Notes
2019-02-24	4th Category Title	3885221191	3	
2019-02-23	23 Regular Round Wins	35113224541	3	
2019-02-23	3rd Category Title	35113224541	3	
2019-02-23	2nd Category Title	35113224541	3	
2019-07-14	32 Quick Draw Round Wins	26122114722	1	
2019-07-22	30 Regular Round Wins	35113224542	2	
2019-09-21	1st Category Title	35113224542	3	
2019-10-27	100 Regular Round Wins	35113224542	2	
2019-02-17	Candidate Master Title	35113224542	1	



# REGISTERING FOR IN-PERSON TOURNAMENTS

We are utilizing the King Registration System for in-person tournaments.

- Only coaches/school representative may register students
- Schools need to coordinate and communicate with parents before registering students
- Tournament registrations deadlines and policies will be strictly enforced
- No offline registrations will be accepted

# HS NATIONAL TOURNAMENT



## National High School Chess Championship April 5-7 Baltimore Convention Center, MD

We will be selecting up to 10 schools to participate in the Nationals as part of our group. Students must be in grade 7-12. CPS Academic Competition will arrange travel to and from the tournament, shared double bed hotel room (2 students per room / 1 chaperone per room), and cover the tournament entry fees and US Chess Membership, if needed for the tournament.

Students will arrive on April 4 so that they can participate in the Blitz tournament and return on Monday April 8.

# HS NATIONAL SELECTION CRITERIA



## **Selection of schools will be considered based on the following criteria:**

- 1) Schools share in the cost of funding this trip by arranging to cover their student and chaperones meals
- 2) Priority will be given to schools that were not selected to attend in previous years
- 3) Active participation in the Academic Chess program over past several years
- 4) Provide two level 1 chaperones for the trip
- 5) Send a minimum of 6, maximum of 8 students in 7th - 12th grade

Interest letters will be distributed in November with the return due date of December 8.

Announcement of school selections will be done by December 15

# CPS CHESS WEBSITE

[WWW.CPSCHESS.ORG](http://WWW.CPSCHESS.ORG)

The website provides information on the CPS chess programs to players, coaches, parents and schools, that includes

- Program Information
- Events Calendar
- Contact Information
- Resources
- Program Forms

# CHESSKID WEBSITE



[WWW.CHESSKID.COM](http://WWW.CHESSKID.COM)

Academic Chess is utilizing the ChessKid.com platform for online tournaments and training

- CPS has an Enterprise account
- Accounts will be issued to new students
- Existing accounts can be transferred to the CPS school group
- CPSCHESS.ORG site has a page detailing our use of ChessKid.com



# CHESSKID ACCOUNTS

- CPS will provide gold memberships to students who wish to participate in any of our online programming
- Students must have their ChessKid account associated with the CPS Enterprise Account which is grouped by schools

# CHESKID USERNAME

Student usernames are required to conform to the standards set by CPS.

- We must have received a signed [ACADEMIC CHESS PARENT PERMISSION FORM](#)
- Account usernames MUST follow this pattern: School Name, Student's First Name or other name in place of the student's first name. i.e. CantyDavid or CantyDavid2 or CantyChesskid
- Students with existing account that transfer in **Must** have their usernames changed comply with item #2 above
- This policy complies with the [CPS Acceptable Use Policy](#) for E-Learning and communicating with student
- New usernames may take up to 24 hrs to be activated by ChessKids

# CHESSKID STUDENT SAFETY

**ChessKid is not a social networking site and students cannot:**

- Access outside websites from ChessKid
- Message/chat with each other on the site

# QUESTIONS



## VIRTUAL SEMINAR FOR CPS CHESS PARENTS

